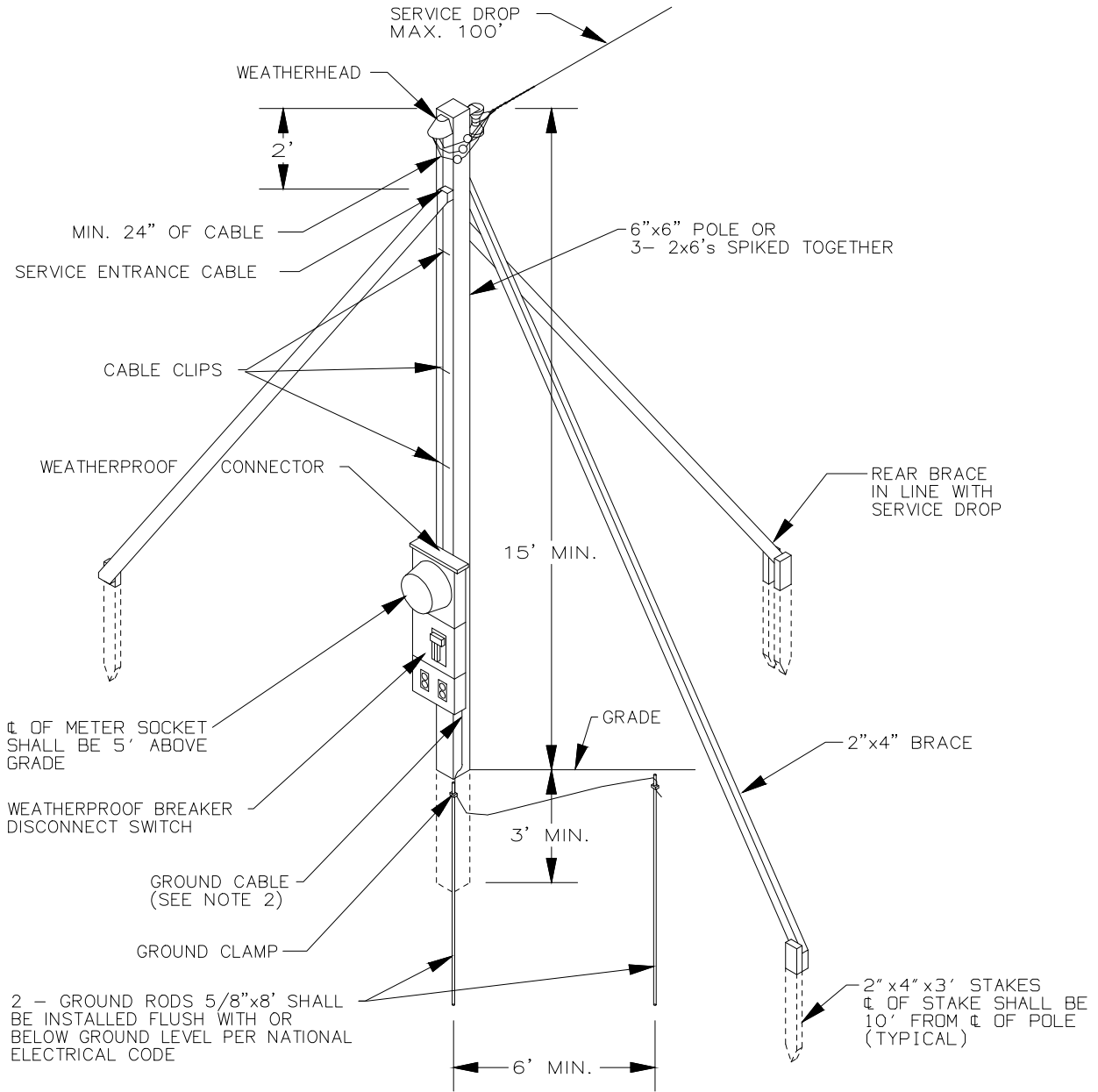



TYPICAL TEMPORARY SERVICE

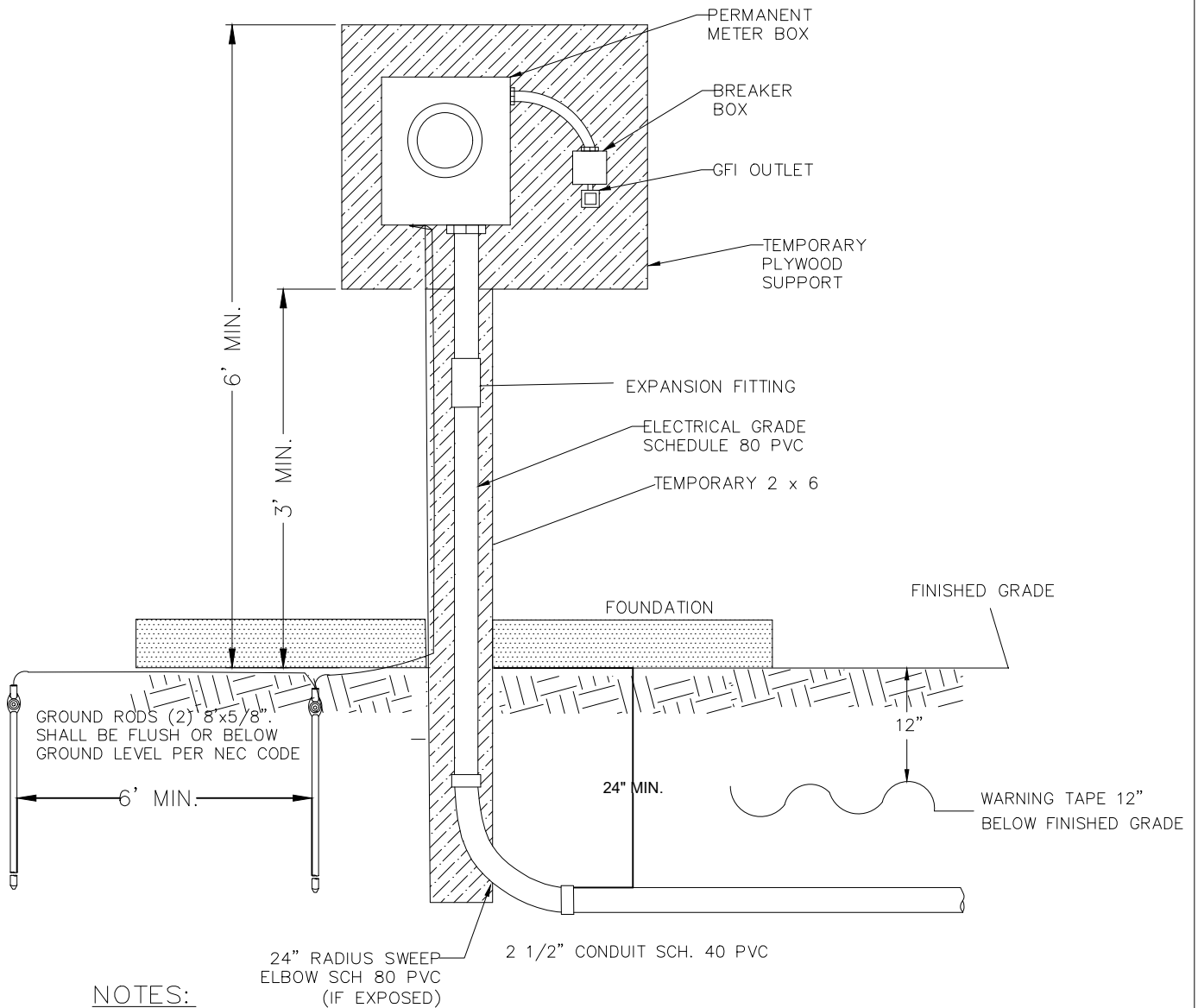


NOTES:

1. A minimum of 18' clearance is required above all roads, streets, nonresidential driveways, parking lots and other land traversed by vehicles.
2. A minimum #6 copper ground cable must be connected in the meter socket, to its own ground terminal. The grounding electrode conductor shall be adequately protected.
3. Temporary service is limited to a six month time period unless extension is approved by VEC.
4. Rain tight service equipment, with ground fault protection and provision for locking, and all other materials and equipment to be owned and installed by customer. VEC to install meter and service drop and connect service drop at weatherhead.
5. Service location and type of construction must be approved in advance by VEC.
6. Where subject to state or local electrical inspection, such inspection must be made prior to energizing.


							VERMONT ELECTRIC COOPERATIVE INC. JOHNSON, VT	
							TYPICAL TEMPORARY SERVICE	
							DES: DRN: CB CKD: SCALE: NONE DATE: 07/10/2017	DWG. NO. 301 Page 1
REV	DATE	REVISION DESCRIPTION	DRN	CKD			REV 1	

TEMPORARY TO PERMANENT UNDERGROUND SERVICE 400 AMP & BELOW

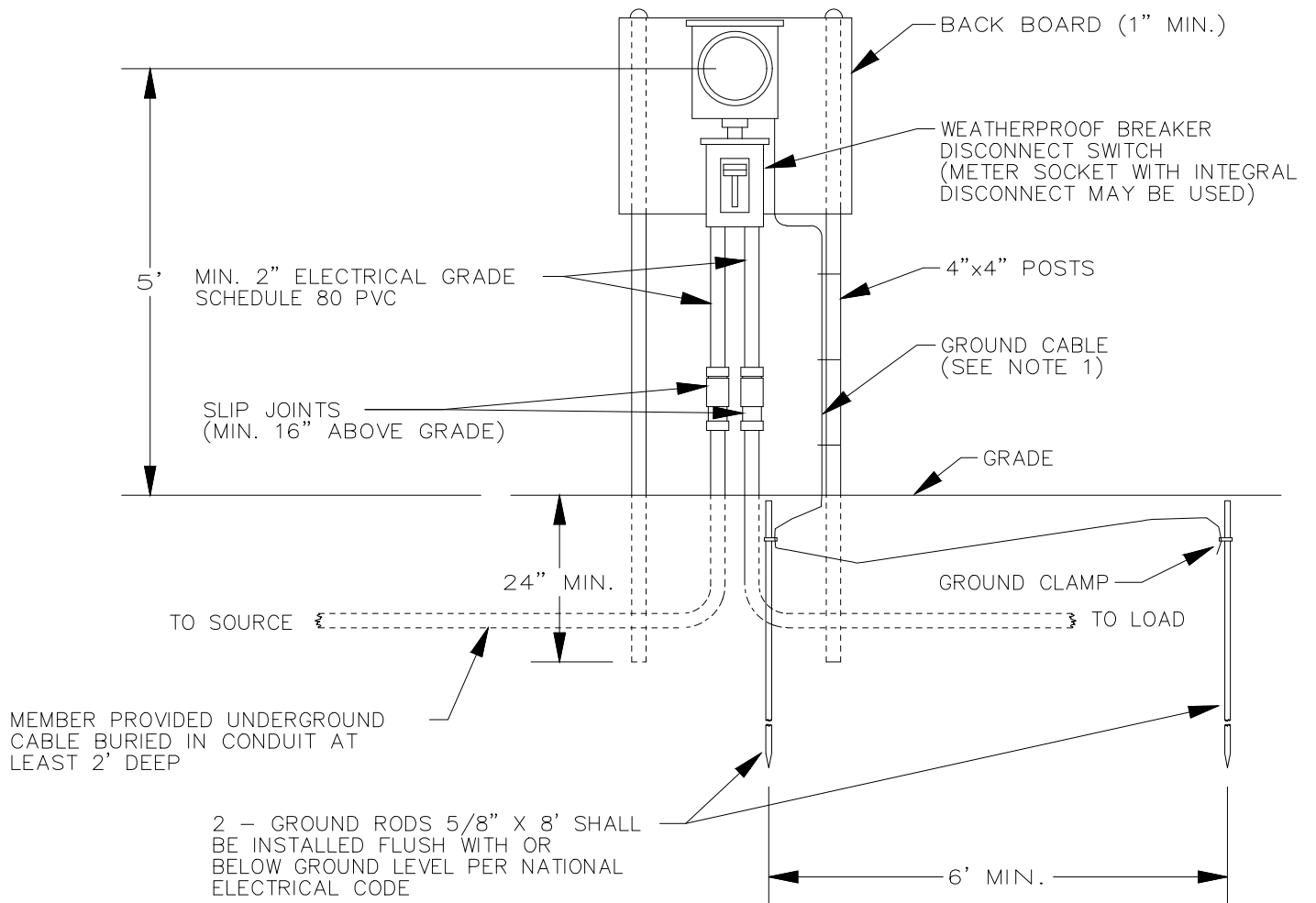


NOTES:

1. A minimum #6 copper ground cable must be connected in the meter socket to its own ground terminal. The grounding electrode conductor shall be adequately protected.
2. Temporary service is limited to six month time period unless extension is approved by VEC.
3. Rain tight service equipment, with ground fault protection (per NEC) with provision for locking. VEC will install meter and make service connection.
4. Service location and type of construction must be approved in advance by VEC.
5. Where subject to state or local electrical inspection, such inspection must be made prior to energizing.
6. In order to limit the FAULT AMP CURRENT to less than 10,000 amps at the breaker, this pedestal shall be located a sufficient distance from the transformer. Example being 20 feet of #2 Alc. service cable.


						 <small>the way we live today</small>	VERMONT ELECTRIC COOPERATIVE INC. JOHNSON, VT TEMPORARY TO PERMANENT
DES: RJP	DRN: RJP					DWG. NO.	302 Page 2
CKD:	SCALE: NONE					REV	1
DATE: 07/10/2017					DATE:	07/10/2017	
REV	DATE	REVISION DESCRIPTION	DRN	CKD			

TYPICAL TEMPORARY UNDERGROUND SERVICE

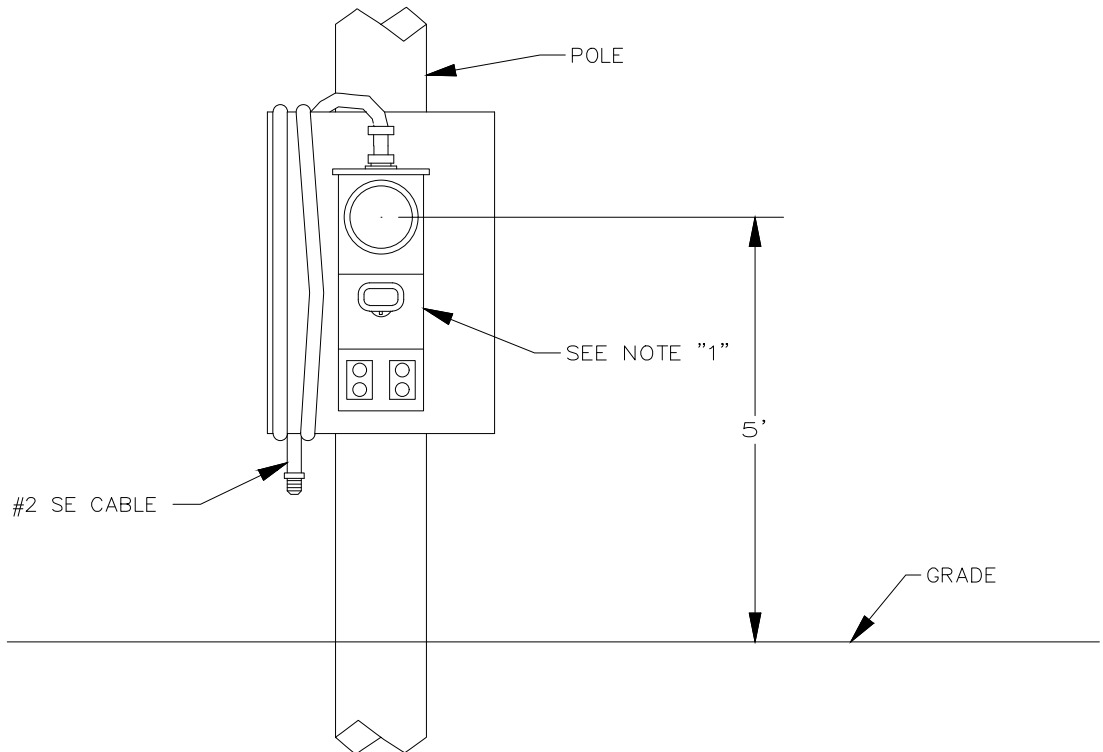


NOTES:

1. A minimum #6 copper ground cable must be connected in the meter socket to its own ground terminal. The grounding electrode conductor shall be adequately protected.
2. Temporary service is limited to six month time period unless extension is approved by VEC.
3. Rain tight service equipment, with ground fault protection (per NEC) with provision for locking. VEC will install meter and make service connection.
4. Service location and type of construction must be approved in advance by VEC.
5. Where subject to state or local electrical inspection, such inspection must be made prior to energizing.
6. In order to limit the FAULT AMP CURRENT to less than 10,000 amps at the breaker, this pedestal shall be located a sufficient distance from the transformer. Example being 20 feet of #2 Alc. service cable.


						 <small>energy smart today</small>	VERMONT ELECTRIC COOPERATIVE INC.
							JOHNSON, VT
							TYPICAL TEMPORARY UNDERGROUND SERVICE
DES:	DRN:	CKD:	SCALE:	NONE	DATE:	07/10/2017	DWG. NO. 302 Page 1 REV 1
REV	DATE	REVISION DESCRIPTION	DRN	CKD			

TYPICAL TEMPORARY METER ON A POLE



NOTES:

1. RAIN TIGHT SERVICE EQUIPMENT WITH GROUND FAULT PROTECTION AND PROVISION FOR LOCKING SHALL BE USED AS PER NATIONAL ELECTRICAL CODE (NEC).
2. INSTALLATION AND REMOVAL OF THE SE CABLE TO THE POLE ABOVE THE LEVEL OF THE METER SOCKET MUST BE DONE BY THE UTILITY. INSTALLATION ON THE STRUCTURES OR OTHER TYPE OF CONSTRUCTION OTHER THAN ABOVE, MAY BE PERMITTED ONLY WITH ADVANCE APPROVAL OF UTILITY.
3. WHERE SUBJECT TO STATE OR LOCAL ELECTRICAL INSPECTION, SUCH INSPECTION MUST BE MADE PRIOR TO ENERGIZING.
4. CHECK WITH VEC ON COST, THE MEMBER WILL SUPPLY TEMPORARY CONNECTION.
5. TEMPORARY SERVICE IS LIMITED TO A SIX (6) MONTH TIME PERIOD UNLESS EXTENSION IS APPROVED BY VEC.
6. THE SEU CABLE'S LENGTH SHALL BE SUFFICIENT TO REACH JUST ABOVE THE NEUTRAL/SECONDARY.
7. VEC WILL GROUND THE METER SOCKET

						 VERMONT ELECTRIC COOPERATIVE INC. JOHNSON, VT	
						TYPICAL TEMPORARY SERVICE - POLE	
						DES: DRN: CB CKD: SCALE: NONE DATE: 07/10/2017	DWG. NO. 303 Page 1
REV	DATE	REVISION DESCRIPTION	DRN	CKD			REV 1