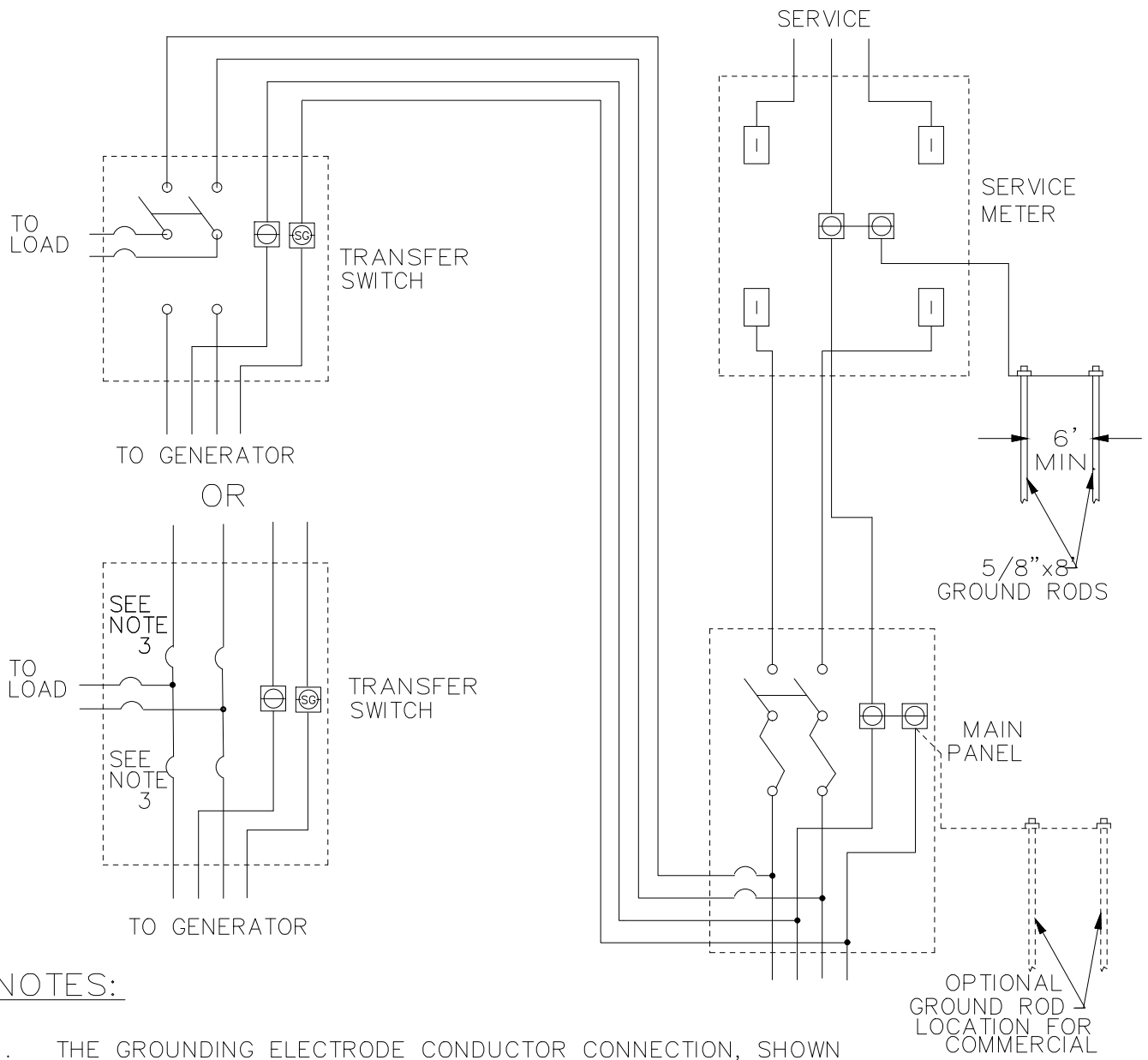



TYPICAL SWITCHING OF CUSTOMERS
EMERGENCY SUPPLY - ALTERNATE CONNECTION
 THREE WIRE, SINGLE PHASE SERVICE

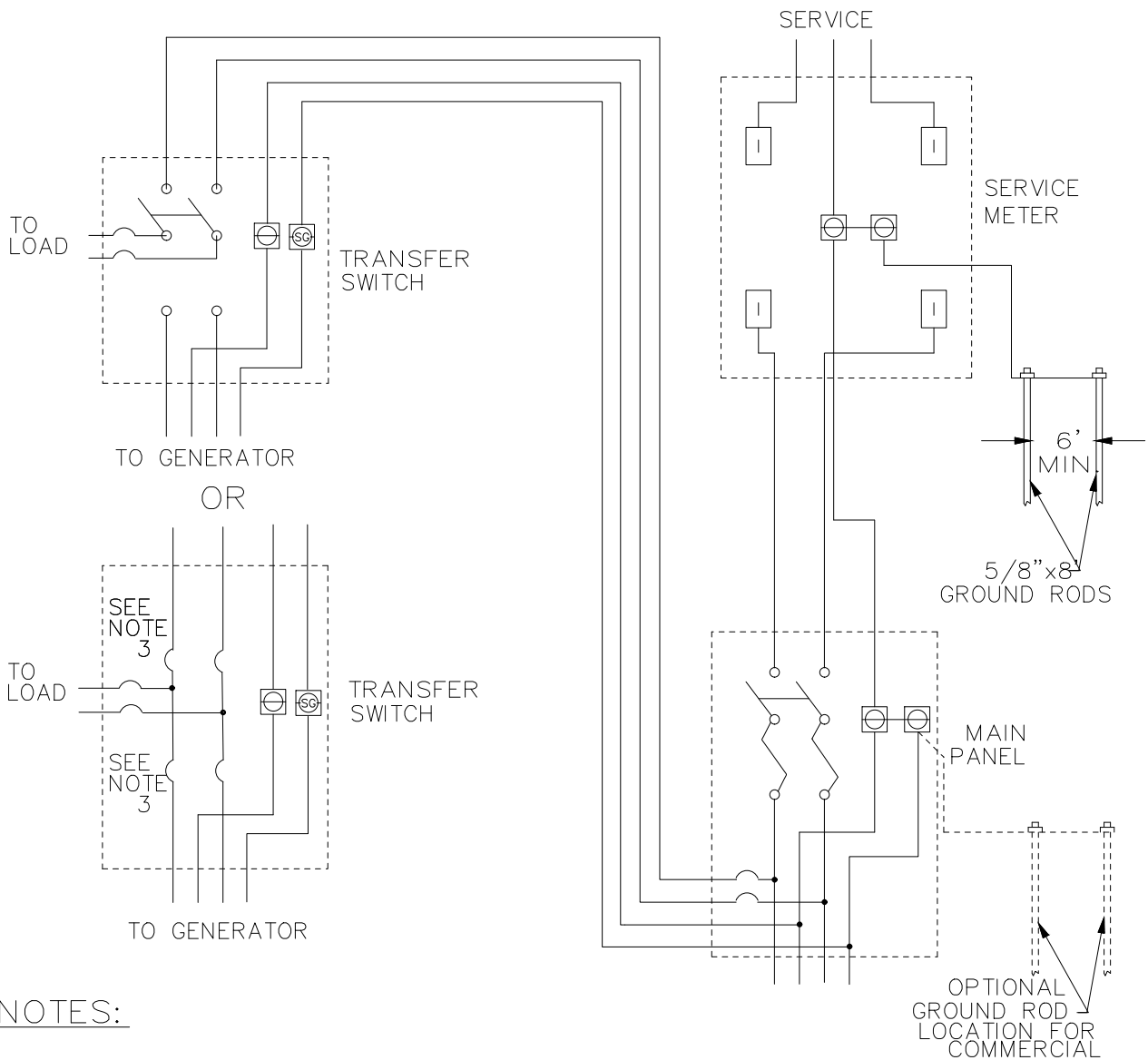


NOTES:

1. THE GROUNDING ELECTRODE CONDUCTOR CONNECTION, SHOWN IN THE METER SOCKET, MAY BE LOCATED IN THE DISTRIBUTION PANEL.
2. COMMERCIALLY AVAILABLE STANDBY GENERATORS MAY BE WIRED WITH THE SAFETY GROUND BONDED TO THE NEUTRAL. IF SO, REMOVE THE BOND.
3. THE SCHEMATIC REPRESENTS A DEVICE WITH TWO BREAKERS THAT ARE MECHANICALLY LINKED SUCH THAT ONE OF THE PAIR IS ALWAYS OPEN. IF SUCH DEVICES ARE ACCEPTABLE THEY SHALL NOT BE EASILY DISABLED OR BROKEN (ALLOWING THE TWO SOURCES TO BE INTERCONNECTED).
4. METALLIC ENCLOSURES WITHIN ARM'S REACH SHALL BE BONDED TOGETHER IN SUCH A WAY TO PREVENT THE BONDING CONDUCTOR FROM CARRYING RETURN CURRENT.


						 the co-op advantage energy smart today	VERMONT ELECTRIC COOPERATIVE INC. JOHNSON, VT TYPICAL SWITCHING OF CUSTOMER'S EMERGENCY SUPPLY - ALTERNATE CONNECTION
DES:	DRN:	CB					DWG. NO. 402 Page 2
CKD:	SCALE:	NONE					REV 1
DATE:	07/10/2017						
REV	DATE	REVISION DESCRIPTION	DRN	CKD			

TYPICAL SWITCHING OF CUSTOMERS
EMERGENCY SUPPLY
 THREE WIRE, SINGLE PHASE SERVICE



NOTES:

1. THE GROUNDING ELECTRODE CONDUCTOR CONNECTION, SHOWN IN THE METER SOCKET, MAY BE LOCATED IN THE DISTRIBUTION PANEL.
2. COMMERCIALY AVAILABLE STANDBY GENERATORS MAY BE WIRED WITH THE SAFETY GROUND BONDED TO THE NEUTRAL. IF SO, REMOVE THE BOND.
3. THE SCHEMATIC REPRESENTS A DEVICE WITH TWO BREAKERS THAT ARE MECHANICALLY LINKED SUCH THAT ONE OF THE PAIR IS ALWAYS OPEN. IF SUCH DEVICES ARE ACCEPTABLE THEY SHALL NOT BE EASILY DISABLED OR BROKEN (ALLOWING THE TWO SOURCES TO BE INTERCONNECTED).
4. METALLIC ENCLOSURES WITHIN ARM'S REACH SHALL BE BONDED TOGETHER IN SUCH A WAY TO PREVENT THE BONDING CONDUCTOR FROM CARRYING RETURN CURRENT.

						 VERMONT ELECTRIC COOPERATIVE INC. JOHNSON, VT
						TYPICAL SWITCHING OF CUSTOMER'S EMERGENCY SUPPLY
						DWG. NO. 402 Page 1
REV	DATE	REVISION DESCRIPTION	DRN	CKD	DES: DRN: CB CKD: SCALE: NONE DATE: 07/10/2017	REV 