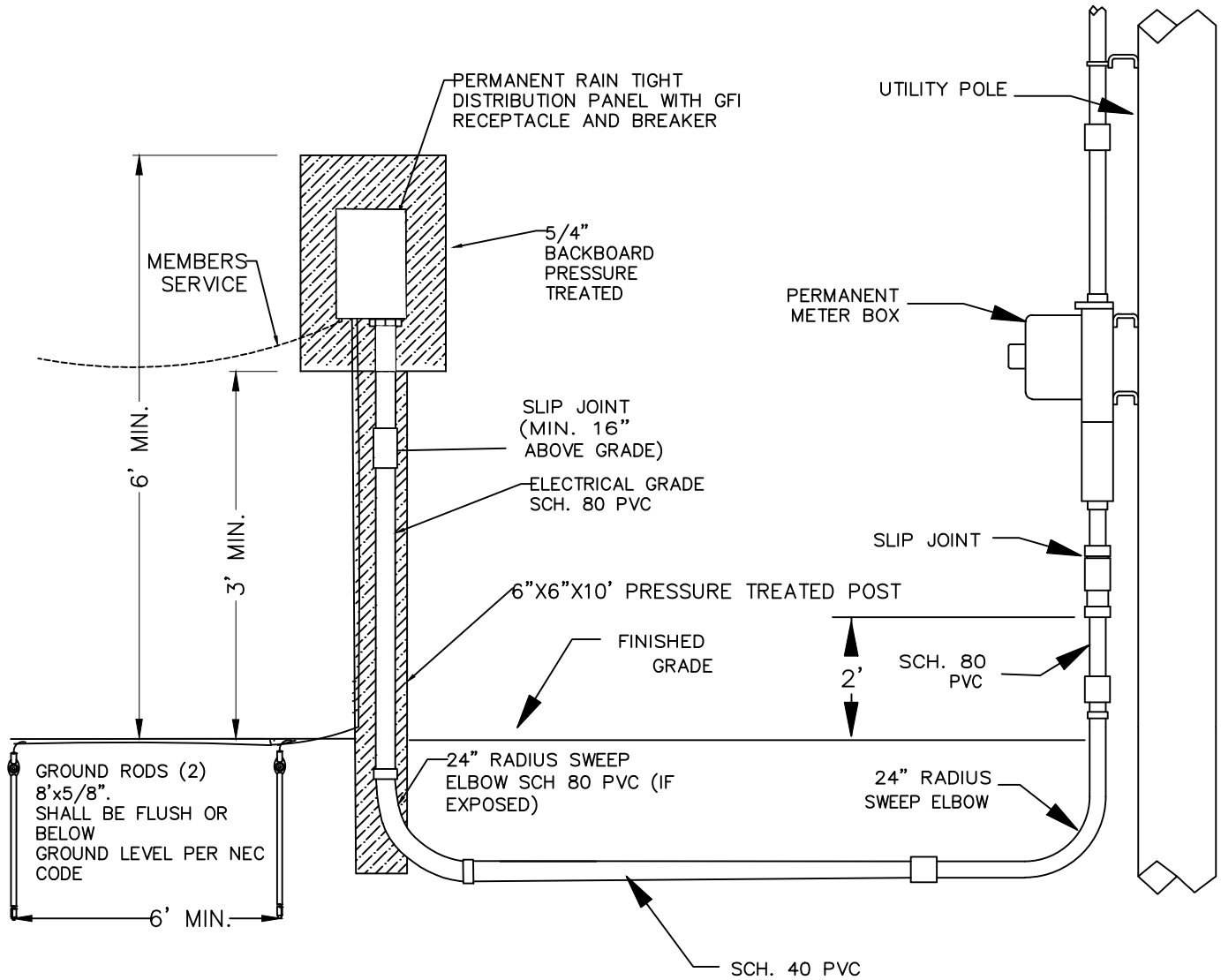


MINIMUM REQUIREMENTS FOR MEMBER OWNED SERVICE



NOTES:

1. A minimum #6 copper ground cable must be connected in the meter socket to its own ground terminal. The grounding electrode conductor shall be adequately protected.
2. Member owned service breaker protection shall be sized to the load
3. Rain tight service equipment, with ground fault protection (per NEC) with provision for locking. VEC will install meter and make service connection.
4. Service location and type of construction must be approved in advance by VEC.
5. Where subject to state or local electrical inspection, such inspection must be made prior to energizing.
6. In order to limit the FAULT AMP CURRENT to less than 10,000 amps at the breaker, this pedestal shall be located a sufficient distance from the transformer. Example being 20 feet of #2 Alc. service cable.

						VERMONT ELECTRIC COOPERATIVE INC.	
						JOHNSON, VT	
						MINIMUM REQUIREMENTS FOR MEMBER OWNED SERVICE	
REV	DATE	REVISION DESCRIPTION	DRN	CKD	DES: RJP	DRN: RJP	DWG. NO. 743
					CKD:	SCALE: NONE	
					DATE: 07/10/2017		